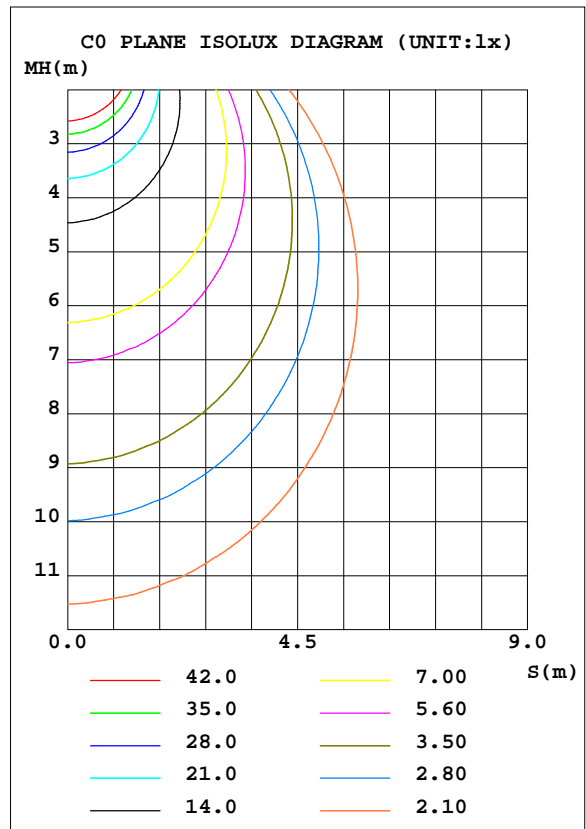
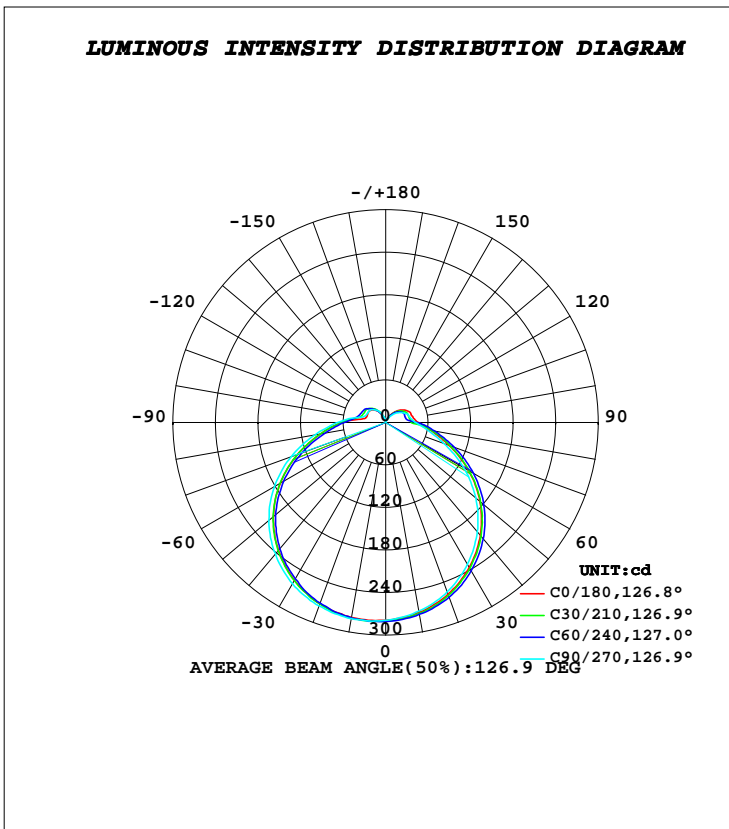


LUMINAIRE PHOTOMETRIC TEST REPORT

Test:U:119.7V I:0.1373A P:15.48W PF:0.9422 Lamp Flux:1170.16x1 lm		
NAME: LED Flush Mount	TYPE:	WEIGHT:
DIM.:	SPEC.:	SERIAL No.:
MFR.: ASL Global.	SUR.:	PROTECTION ANGLE:

DATA OF LAMP		PHOTOMETRIC DATA Eff: 75.57 lm/W			
MODEL	HDT10	I _{max} (cd)	282.6	S/MH(C0/180)	1.26
NOMINAL POWER(W)	15	LOR(%)	100.0	S/MH(C90/270)	1.24
RATED VOLTAGE(V)	120	TOTAL FLUX(lm)	1170.2	η UP, DN(C0-180)	7.0, 39.7
NOMINAL FLUX(lm)	1170.16	CIE CLASS	SEMI-D.	η UP, DN(C180-360)	8.2, 45.1
LAMPS INSIDE	1	η up(%)	15.2	CIBSE SHR NOM	1.50
TEST VOLTAGE(V)	119.7	η down(%)	84.8	CIBSE SHR MAX	1.50



C Range: 0 - 360DEG
C Interval: 30.0DEG
Test Speed: HIGH
Temperature: 25.3DEG
Operators: 曾本
Test Date: 2023-6-12

γ Range: 0 - 180DEG
γ Interval: 1.0DEG
Test System: EVERFINE GO-2000B_V1 SYSTEM V2.0.269
Humidity: 65.0%
Test Distance: 7.350m [K=1.0000]
Remarks: LM79

ZONAL FLUX DIAGRAM

ZONAL FLUX DIAGRAM:

γ	C0	C45	C90	C135	C180	C225	C270	C315	γ	Φ zone	Φ total	%lum, lamp
10	271.6	274.0	270.2	274.1	279.2	280.2	281.1	275.5	0- 10	26.49	26.49	2.26,2.26
20	257.8	261.0	254.3	263.0	271.8	271.6	275.4	264.8	10- 20	76.67	103.2	8.82,8.82
30	236.0	239.8	230.9	245.1	257.2	256.3	262.6	247.2	20- 30	118.5	221.7	18.9,18.9
40	207.8	211.7	201.4	219.6	235.6	234.2	242.0	222.2	30- 40	147.3	368.9	31.5,31.5
50	173.6	177.7	166.1	188.2	206.8	205.0	215.3	191.0	40- 50	159.7	528.6	45.2,45.2
60	135.0	139.3	126.6	152.2	171.8	169.3	181.1	154.6	50- 60	154.4	683.0	58.4,58.4
70	95.48	100.2	87.84	115.5	132.6	129.2	141.8	117.0	60- 70	133.2	816.2	69.7,69.7
80	64.78	67.73	59.17	82.25	93.71	90.17	101.4	84.19	70- 80	102.8	919.0	78.5,78.5
90	46.30	39.98	42.45	56.76	62.20	60.20	67.97	59.09	80- 90	72.76	991.8	84.8,84.8
100	39.75	31.87	35.95	37.26	32.16	41.21	41.14	41.82	90-100	49.65	1041	89,89
110	37.82	31.18	33.32	29.00	27.99	36.05	29.93	35.70	100-110	36.63	1078	92.1,92.1
120	34.07	29.64	27.91	26.42	28.81	34.63	28.70	32.37	110-120	31.44	1109	94.8,94.8
130	27.72	24.57	21.28	23.71	27.29	30.79	27.96	28.30	120-130	25.84	1135	97,97
140	19.40	17.32	14.11	18.60	22.73	24.69	23.21	21.82	130-140	18.38	1154	98.6,98.6
150	10.32	9.012	6.294	12.22	16.34	16.64	17.57	14.56	140-150	10.58	1164	99.5,99.5
160	4.494	3.463	2.203	6.159	8.252	7.376	9.806	8.153	150-160	4.451	1169	99.9,99.9
170	1.499	1.548	1.047	2.336	2.798	3.019	4.795	3.405	160-170	1.226	1170	100,100
180	1.147	1.572	1.830	1.702	1.189	1.543	1.980	1.742	170-180	0.1907	1170	100,100
DEG	LUMINOUS INTENSITY:cd									UNIT:lm		

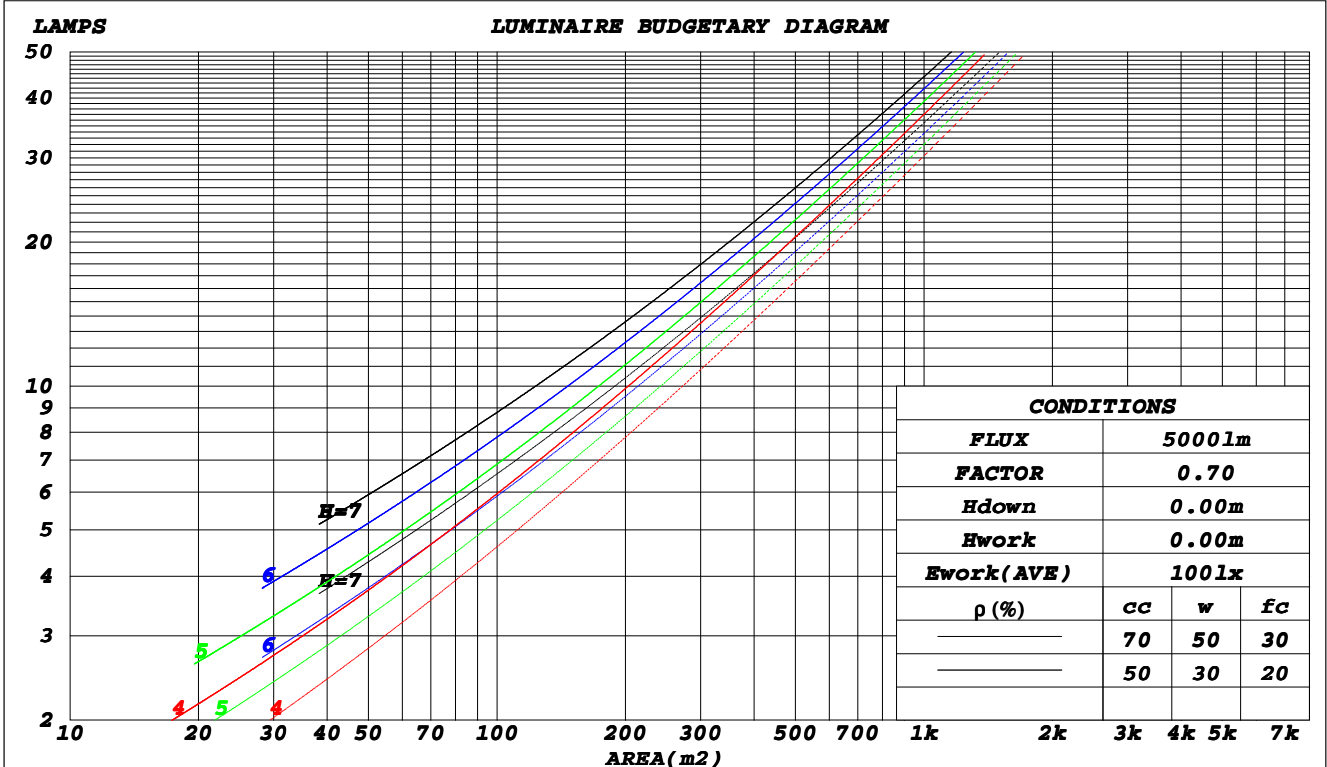
C Range: 0 - 360DEG
C Interval: 30.0DEG
Test Speed: HIGH
Temperature:25.3DEG
Operators:曾本
Test Date:2023-6-12

γ Range: 0 - 180DEG
 γ Interval: 1.0DEG
Test System:EVERFINE GO-2000B_V1 SYSTEM V2.0.269
Humidity:65.0%
Test Distance:7.350m [K=1.0000]
Remarks: LM79

CU AND LUMINAIRE BUDGETARY ESTIMATE DIAGRAM

Test:U:119.7V I:0.1373A P:15.48W PF:0.9422 Lamp Flux:1170.16x1 lm		
NAME: 10寸超薄	TYPE:超薄	WEIGHT:
DIM.:	SPEC.:10寸	SERIAL No.:
MFR.: WORBEST	SUR.:	PROTECTION ANGLE:

ρ_{cc}	80%			70%			50%			30%			10%			0
ρ_w	50%	30%	10%	50%	30%	10%	50%	30%	10%	50%	30%	10%	50%	30%	10%	0
ρ_{fc}	20%			20%			20%			20%			20%			0
RCR	RCR:Room Cavity Ratio						Coefficients of Utilization(CU)									
0.0	1.15	1.15	1.15	1.11	1.11	1.11	1.03	1.03	1.03	.95	.95	.95	.88	.88	.88	.85
1.0	.97	.92	.87	.93	.89	.85	.86	.83	.79	.80	.77	.74	.74	.71	.69	.66
2.0	.83	.76	.69	.80	.73	.67	.74	.68	.64	.69	.64	.60	.63	.60	.56	.53
3.0	.73	.64	.57	.70	.62	.55	.65	.58	.52	.60	.54	.49	.55	.51	.47	.44
4.0	.64	.55	.47	.61	.53	.46	.57	.50	.44	.53	.47	.42	.49	.44	.40	.37
5.0	.57	.47	.40	.55	.46	.39	.51	.43	.38	.47	.41	.36	.44	.38	.34	.31
6.0	.51	.42	.35	.49	.40	.34	.46	.38	.33	.42	.36	.31	.40	.34	.30	.27
7.0	.46	.37	.31	.44	.36	.30	.41	.34	.29	.39	.32	.27	.36	.30	.26	.24
8.0	.42	.33	.27	.40	.32	.26	.38	.31	.25	.35	.29	.24	.33	.27	.23	.21
9.0	.38	.30	.24	.37	.29	.24	.35	.28	.23	.32	.26	.22	.30	.25	.21	.19
10.0	.35	.27	.22	.34	.26	.21	.32	.25	.21	.30	.24	.20	.28	.23	.19	.17



C Range: 0 - 360DEG
 C Interval: 30.0DEG
 Test Speed: HIGH
 Temperature: 25.3DEG
 Operators: 曾本
 Test Date: 2023-6-12

γ Range: 0 - 180DEG
 γ Interval: 1.0DEG
 Test System: EVERFINE GO-2000B_V1 SYSTEM V2.0.269
 Humidity: 65.0%
 Test Distance: 7.350m [K=1.0000]
 Remarks: LM79

WEC AND CCEC

Test:U:119.7V I:0.1373A P:15.48W PF:0.9422 Lamp Flux:1170.16x1 lm		
NAME: 10寸超薄	TYPE:超薄	WEIGHT:
DIM.:	SPEC.:10寸	SERIAL No.:
MFR.: WORBEST	SUR.:	PROTECTION ANGLE:

ρ_{cc}	80%			70%			50%			30%			10%			0
ρ_w	50%	30%	10%	50%	30%	10%	50%	30%	10%	50%	30%	10%	50%	30%	10%	0
ρ_{fc}	20%			20%			20%			20%			20%			0
RCR	RCR:Room Cavity Ratio						Wall Exitance Coefficients(WEC)									
0.0																
1.0	.368	.209	.066	.356	.203	.064	.334	.191	.061	.313	.181	.058	.295	.171	.055	
2.0	.323	.177	.054	.313	.172	.053	.293	.163	.051	.274	.154	.048	.257	.146	.046	
3.0	.290	.154	.046	.280	.150	.045	.262	.142	.043	.245	.134	.041	.230	.127	.039	
4.0	.262	.136	.040	.254	.133	.039	.237	.126	.038	.222	.119	.036	.208	.113	.034	
5.0	.239	.122	.035	.231	.119	.035	.217	.113	.033	.203	.107	.032	.190	.102	.030	
6.0	.220	.110	.032	.213	.107	.031	.199	.102	.030	.187	.097	.029	.175	.092	.027	
7.0	.203	.100	.028	.197	.098	.028	.184	.093	.027	.173	.089	.026	.162	.084	.025	
8.0	.189	.092	.026	.183	.090	.025	.172	.086	.024	.161	.082	.024	.151	.078	.023	
9.0	.176	.085	.024	.171	.083	.023	.160	.079	.022	.151	.075	.022	.141	.072	.021	
10.0	.165	.079	.022	.160	.077	.022	.150	.074	.021	.141	.070	.020	.133	.067	.019	

ρ_{cc}	80%			70%			50%			30%			10%			0
ρ_w	50%	30%	10%	50%	30%	10%	50%	30%	10%	50%	30%	10%	50%	30%	10%	0
ρ_{fc}	20%			20%			20%			20%			20%			0
RCR	RCR:Room Cavity Ratio						Ceiling Cavity Exitance Coefficients(CCEC)									
0.0	.307	.307	.307	.262	.262	.262	.179	.179	.179	.103	.103	.103	.033	.033	.033	
1.0	.301	.273	.247	.258	.234	.212	.176	.161	.147	.102	.093	.085	.033	.030	.028	
2.0	.294	.250	.212	.252	.215	.183	.173	.149	.128	.100	.086	.075	.032	.028	.024	
3.0	.287	.233	.190	.246	.201	.165	.169	.140	.116	.097	.082	.068	.031	.026	.022	
4.0	.279	.220	.175	.240	.190	.152	.165	.133	.107	.095	.078	.063	.031	.025	.021	
5.0	.272	.210	.165	.233	.182	.144	.161	.127	.102	.093	.075	.060	.030	.024	.020	
6.0	.264	.202	.158	.227	.175	.138	.157	.123	.097	.091	.072	.058	.029	.024	.019	
7.0	.257	.196	.153	.221	.170	.133	.153	.119	.094	.089	.070	.056	.029	.023	.019	
8.0	.251	.190	.149	.216	.165	.130	.149	.116	.092	.087	.068	.055	.028	.022	.018	
9.0	.244	.185	.146	.210	.161	.127	.146	.113	.090	.085	.067	.054	.028	.022	.018	
10.0	.239	.181	.143	.206	.157	.125	.143	.111	.089	.083	.065	.053	.027	.021	.018	

C Range: 0 - 360DEG
 C Interval: 30.0DEG
 Test Speed: HIGH
 Temperature: 25.3DEG
 Operators: 曾本
 Test Date: 2023-6-12

γ Range: 0 - 180DEG
 γ Interval: 1.0DEG
 Test System: EVERFINE GO-2000B_V1 SYSTEM V2.0.269
 Humidity: 65.0%
 Test Distance: 7.350m [K=1.0000]
 Remarks: LM79

Uncorrected UGR Table

Test:U:119.7V I:0.1373A P:15.48W PF:0.9422 Lamp Flux:1170.16x1 lm										
NAME: 10寸超薄					TYPE:超薄			WEIGHT:		
DIM.:					SPEC.:10寸			SERIAL No.:		
MFR.: WORBEST					SUR.:			PROTECTION ANGLE:		
ceiling/cavity	0.7	0.7	0.5	0.5	0.3	0.7	0.7	0.5	0.5	0.3
walls	0.5	0.3	0.5	0.3	0.3	0.5	0.3	0.5	0.3	0.3
working plane	0.2	0.2	0.2	0.2	0.2	0.2	0.2	0.2	0.2	0.2
Room dimensions	Viewed crosswise					Viewed endwise				
x = 2H y = 2H	15.0	16.4	15.5	16.9	17.4	15.0	16.4	15.5	16.9	17.4
3H	16.8	18.1	17.4	18.6	19.2	16.8	18.0	17.3	18.5	19.1
4H	17.8	19.0	18.3	19.5	20.1	17.6	18.8	18.1	19.4	19.9
6H	18.7	19.9	19.3	20.4	21.0	18.5	19.7	19.1	20.2	20.8
8H	19.3	20.4	19.8	20.9	21.5	19.0	20.1	19.6	20.7	21.3
12H	19.9	21.0	20.5	21.5	22.1	19.6	20.7	20.2	21.2	21.8
4H 2H	15.7	16.9	16.2	17.4	18.0	15.7	16.9	16.2	17.5	18.0
3H	17.7	18.8	18.3	19.4	20.0	17.7	18.8	18.3	19.4	20.0
4H	18.8	19.8	19.4	20.4	21.0	18.8	19.8	19.4	20.3	21.0
6H	20.0	20.8	20.6	21.4	22.1	19.9	20.7	20.5	21.3	22.0
8H	20.6	21.4	21.2	22.0	22.7	20.5	21.3	21.1	21.9	22.6
12H	21.4	22.1	22.0	22.7	23.5	21.2	21.9	21.8	22.5	23.3
8H 4H	19.3	20.1	19.9	20.7	21.4	19.2	20.1	19.9	20.7	21.4
6H	20.7	21.4	21.3	22.0	22.8	20.6	21.3	21.3	22.0	22.7
8H	21.5	22.1	22.2	22.8	23.6	21.4	22.1	22.1	22.7	23.5
12H	22.5	23.0	23.2	23.7	24.5	22.4	22.9	23.0	23.6	24.4
12H 4H	19.4	20.1	20.0	20.7	21.5	19.3	20.1	20.0	20.7	21.4
6H	20.9	21.5	21.6	22.2	22.9	20.8	21.4	21.5	22.1	22.9
8H	21.8	22.3	22.5	23.0	23.8	21.8	22.3	22.4	23.0	23.8
Variations with the observer position at spacings:										
S = 1.0H	+ 0.1 / - 0.1					+ 0.1 / - 0.2				
1.5H	+ 0.2 / - 0.3					+ 0.2 / - 0.3				
2.0H	+ 0.2 / - 0.4					+ 0.2 / - 0.4				

CIE Pub.117 Corrected 1170 lm Total Lamp Luminous Flux.(8log(F/F0) = 0.5)

C Range: 0 - 360DEG
 C Interval: 30.0DEG
 Test Speed: HIGH
 Temperature:25.3DEG
 Operators:曾本
 Test Date:2023-6-12

γ Range: 0 - 180DEG
 γ Interval: 1.0DEG
 Test System:EVERFINE GO-2000B_V1 SYSTEM V2.0.269
 Humidity:65.0%
 Test Distance:7.350m [K=1.0000]
 Remarks: LM79

UTILIZATION FACTORS TABLE

Test:U:119.7V I:0.1373A P:15.48W PF:0.9422 Lamp Flux:1170.16x1 lm		
NAME: 10寸超薄	TYPE:超薄	WEIGHT:
DIM.:	SPEC.:10寸	SERIAL No.:
MFR.: WORBEST	SUR.:	PROTECTION ANGLE:

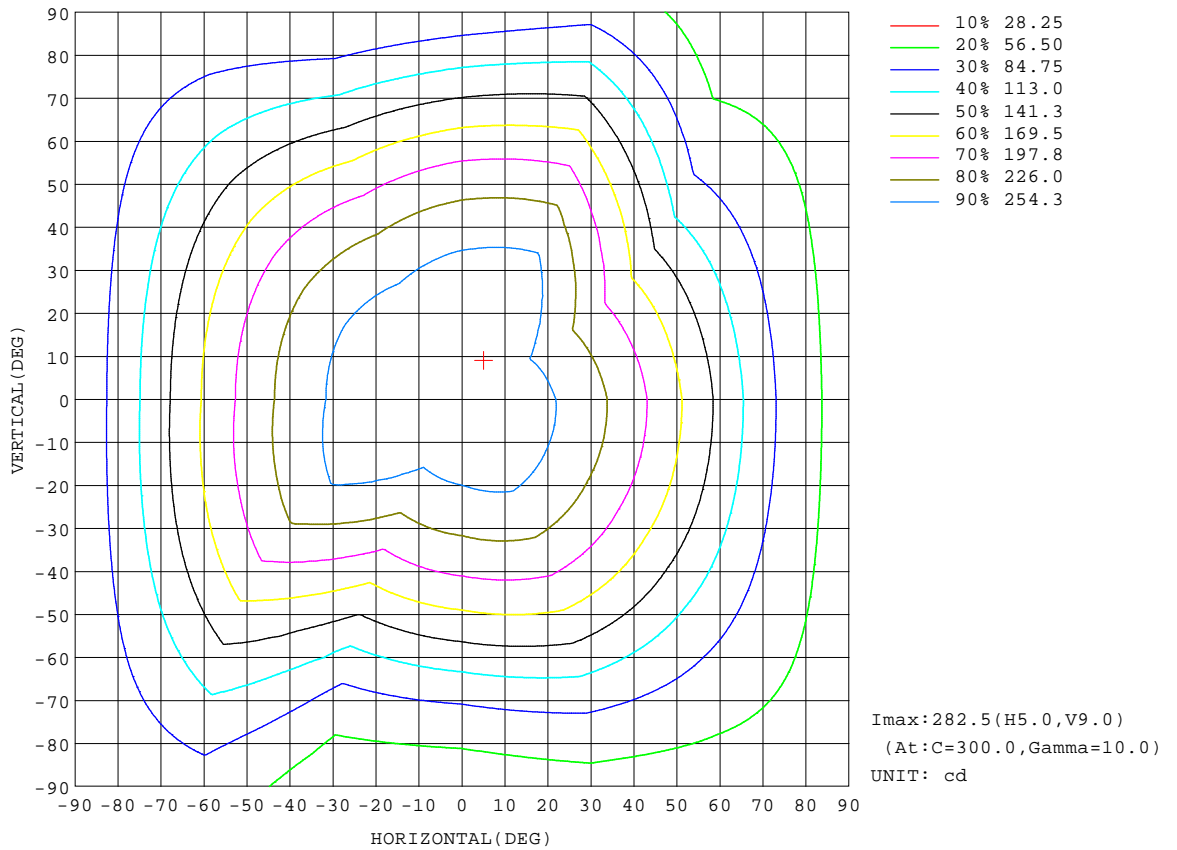
REFLECTANCE										
Ceiling	0.8	0.8	0.8	0.7	0.7	0.7	0.5	0.5	0.5	0
Walls	0.7	0.5	0.3	0.7	0.5	0.3	0.7	0.5	0.3	0
Working plane	0.2	0.2	0.2	0.2	0.2	0.2	0.2	0.2	0.2	0
ROOM INDEX	UTILIZATION FACTORS(PERCENT) $k(RI) \times RCR = 5$									
k = 0.60	49	37	30	48	37	30	47	36	29	23
0.80	59	46	38	57	45	38	55	44	37	29
1.00	67	54	46	65	53	46	62	54	44	36
1.25	74	62	53	72	60	53	67	58	51	42
1.50	79	67	59	76	66	58	72	63	56	46
2.00	86	76	68	83	74	66	78	70	64	52
2.50	90	81	73	87	78	72	81	74	68	56
3.00	94	85	78	91	83	76	84	78	73	60
4.00	99	91	85	95	88	83	88	83	78	65
5.00	102	95	90	98	92	87	91	86	82	68
ROOM INDEX	UF(total)									Direct
According to DIN EN 13032-2 2004			Suspended					SHRNOM = 1.25		

C Range: 0 - 360DEG
C Interval: 30.0DEG
Test Speed: HIGH
Temperature:25.3DEG
Operators:曾本
Test Date:2023-6-12

γ Range: 0 - 180DEG
 γ Interval: 1.0DEG
Test System:EVERFINE GO-2000B_V1 SYSTEM V2.0.269
Humidity:65.0%
Test Distance:7.350m [K=1.0000]
Remarks: LM79

ISOCANDELA DIAGRAM

Test:U:119.7V I:0.1373A P:15.48W PF:0.9422 Lamp Flux:1170.16x1 lm		
NAME: 10寸超薄	TYPE:超薄	WEIGHT:
DIM.:	SPEC.:10寸	SERIAL No.:
MFR.: WORBEST	SUR.:	PROTECTION ANGLE:

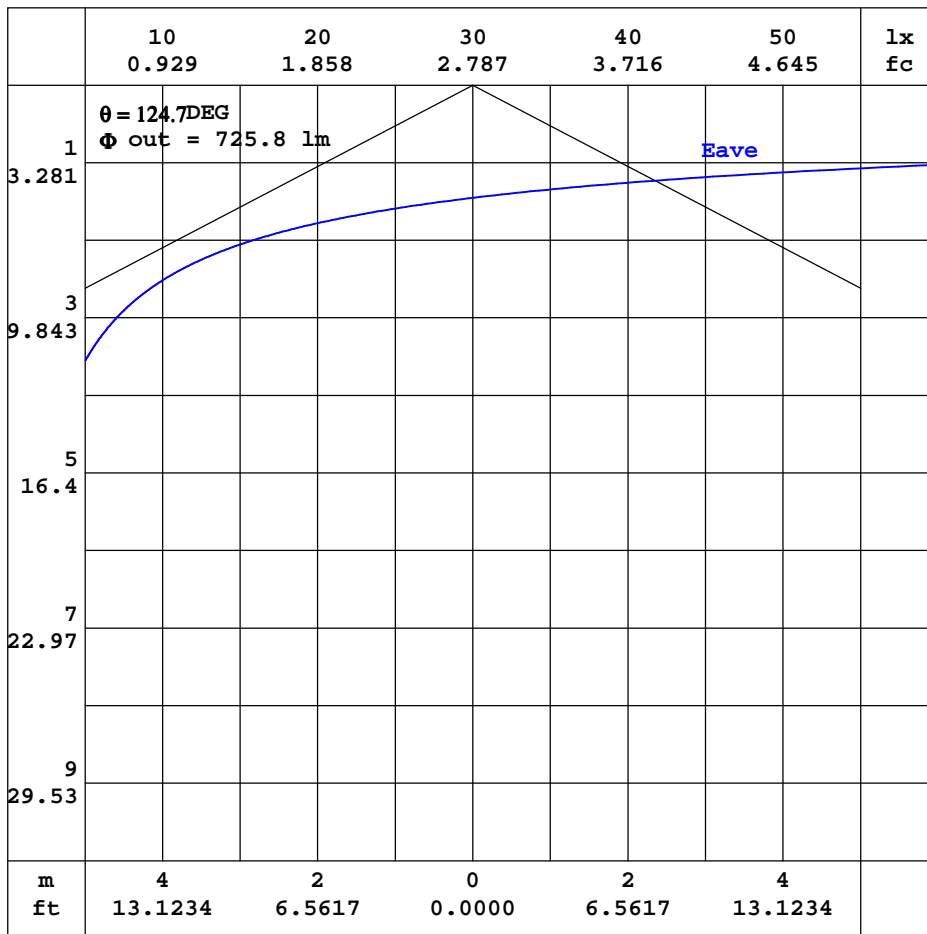


C Range: 0 - 360DEG
C Interval: 30.0DEG
Test Speed: HIGH
Temperature: 25.3DEG
Operators: 曾本
Test Date: 2023-6-12

γ Range: 0 - 180DEG
γ Interval: 1.0DEG
Test System: EVERFINE GO-2000B_V1 SYSTEM V2.0.269
Humidity: 65.0%
Test Distance: 7.350m [K=1.0000]
Remarks: LM79

AAI CURVES

Test:U:119.7V I:0.1373A P:15.48W PF:0.9422 Lamp Flux:1170.16x1 lm		
NAME: 10寸超薄	TYPE:超薄	WEIGHT:
DIM.:	SPEC.:10寸	SERIAL No.:
MFR.: WORBEST	SUR.:	PROTECTION ANGLE:



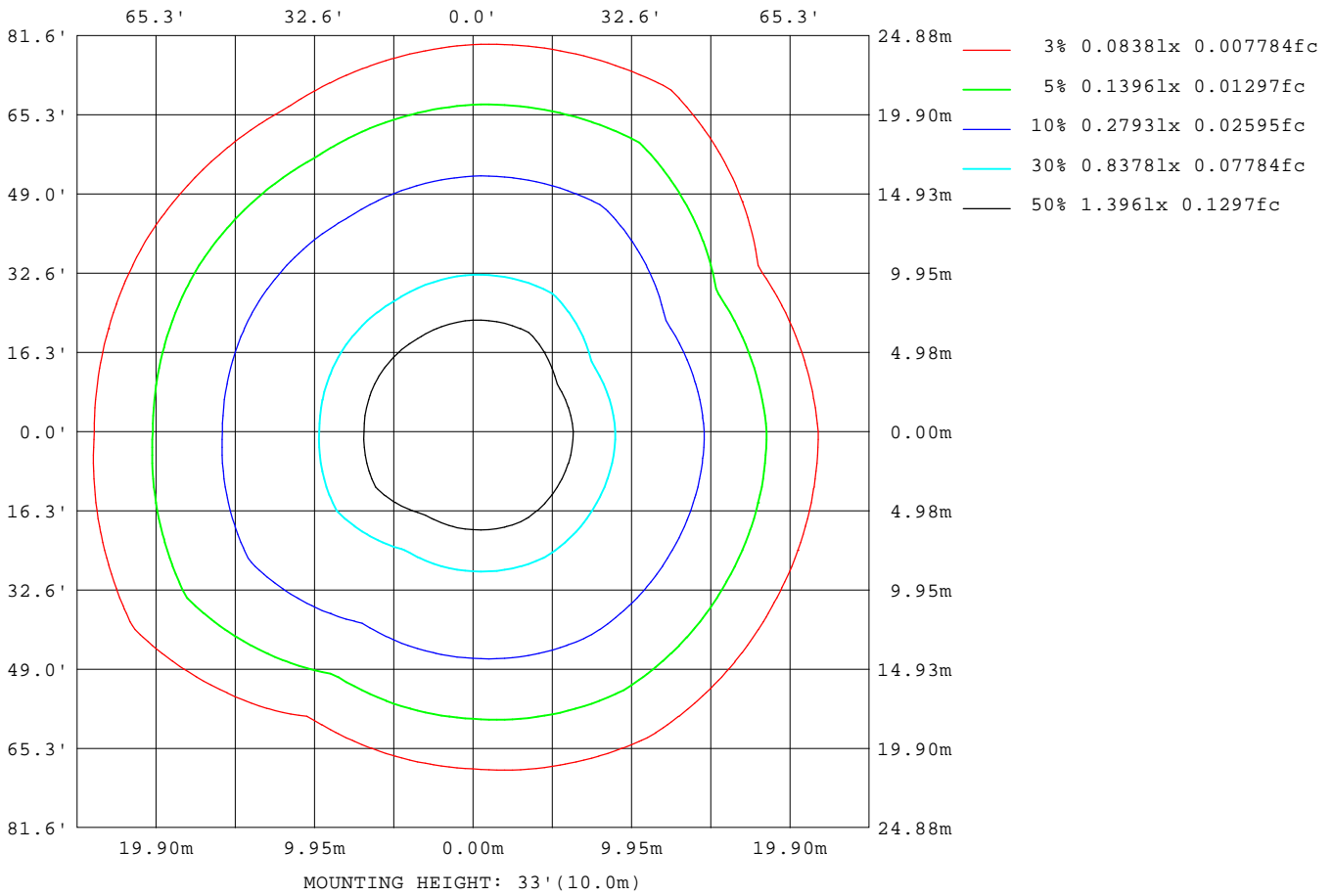
Note:The Curves indicate the illuminated area and the average illumination when the luminaire is at different distance.

C Range: 0 - 360DEG
 C Interval: 30.0DEG
 Test Speed: HIGH
 Temperature: 25.3DEG
 Operators: 曾本
 Test Date: 2023-6-12

γ Range: 0 - 180DEG
 γ Interval: 1.0DEG
 Test System: EVERFINE GO-2000B_V1 SYSTEM V2.0.269
 Humidity: 65.0%
 Test Distance: 7.350m [K=1.0000]
 Remarks: LM79

ISOLUX DIAGRAM

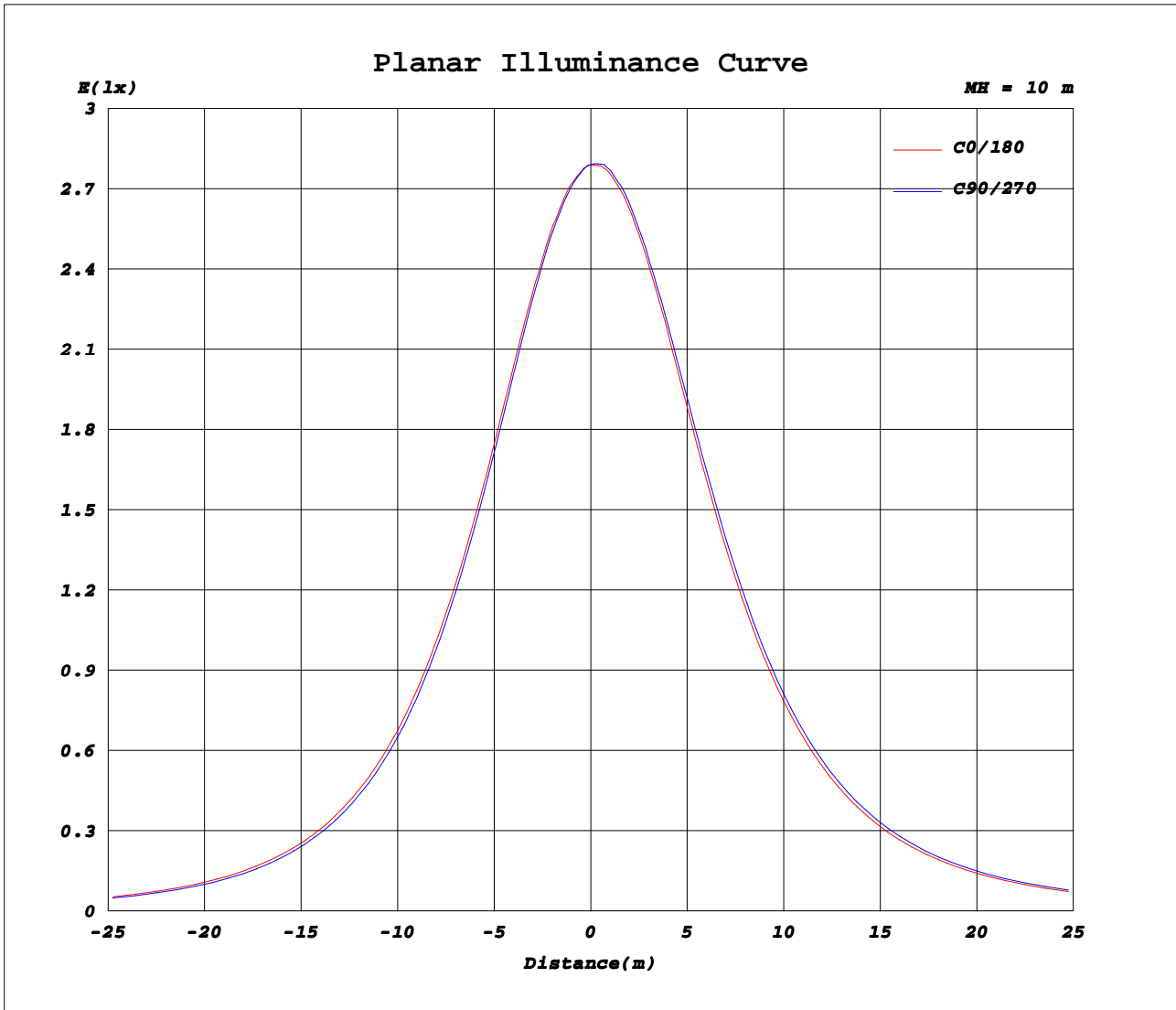
Test:U:119.7V I:0.1373A P:15.48W PF:0.9422 Lamp Flux:1170.16x1 lm		
NAME: 10寸超薄	TYPE:超薄	WEIGHT:
DIM.:	SPEC.:10寸	SERIAL No.:
MFR.: WORBEST	SUR.:	PROTECTION ANGLE:



C Range: 0 - 360DEG
 C Interval: 30.0DEG
 Test Speed: HIGH
 Temperature: 25.3DEG
 Operators: 曾本
 Test Date: 2023-6-12

γ Range: 0 - 180DEG
 γ Interval: 1.0DEG
 Test System: EVERFINE GO-2000B_V1 SYSTEM V2.0.269
 Humidity: 65.0%
 Test Distance: 7.350m [K=1.0000]
 Remarks: LM79

Planar Illuminance Curve



C Range: 0 - 360DEG
C Interval: 30.0DEG
Test Speed: HIGH
Temperature: 25.3DEG
Operators: 曾本
Test Date: 2023-6-12

γ Range: 0 - 180DEG
γ Interval: 1.0DEG
Test System: EVERFINE GO-2000B_V1 SYSTEM V2.0.269
Humidity: 65.0%
Test Distance: 7.350m [K=1.0000]
Remarks: LM79

LUMINOUS DISTRIBUTION INTENSITY DATA

Test:U:119.7V I:0.1373A P:15.48W PF:0.9422 Lamp Flux:1170.16x1 lm		
NAME: 10寸超薄	TYPE:超薄	WEIGHT:
DIM.:	SPEC.:10寸	SERIAL No.:
MFR.: WORBEST	SUR.:	PROTECTION ANGLE:

Table--1

UNIT: cd

C (DEG) \ γ (DEG)	0	30	60	90	120	150	180	210	240	270	300	330							
0	279	280	281	279	279	278	279	280	281	279	279	278							
5	276	278	279	276	274	280	280	281	281	281	281	274							
10	272	273	275	270	268	280	279	280	280	281	283	268							
15	265	267	269	263	260	279	277	277	277	279	281	261							
20	258	260	262	254	250	276	272	272	271	275	279	251							
25	248	250	253	243	239	271	265	266	264	270	275	239							
30	236	238	242	231	225	265	257	258	255	263	268	226							
35	223	224	229	217	210	256	247	248	245	253	260	211							
40	208	209	214	201	194	245	236	236	232	242	249	195							
45	191	192	198	184	176	233	222	223	218	230	237	177							
50	174	175	181	166	157	219	207	207	203	215	223	159							
55	155	156	162	147	137	204	190	190	185	199	208	139							
60	135	136	143	127	117	187	172	172	166	181	191	118							
65	115	116	123	107	99.4	169	152	153	147	162	173	98.5							
70	95.5	97.2	103	87.8	81.5	149	133	132	126	142	153	81.0							
75	78.6	81.3	85.3	71.9	67.1	129	113	112	106	121	133	66.9							
80	64.8	65.7	69.7	59.2	55.7	109	93.7	93.4	86.9	101	113	55.6							
85	54.0	52.5	57.3	49.2	46.7	89.5	76.9	76.7	71.1	83.2	93.7	47.1							
90	46.3	36.1	43.8	42.5	40.4	73.2	62.2	62.0	58.4	68.0	76.2	41.9							
95	41.9	35.5	33.3	38.3	37.0	59.7	45.0	50.6	48.5	55.2	60.9	39.3							
100	39.8	34.3	29.4	36.0	28.1	46.4	32.2	40.0	42.4	41.1	46.5	37.1							
105	38.2	33.8	28.8	34.2	28.9	35.2	28.5	35.8	39.3	32.3	39.8	36.5							
110	37.8	33.6	28.8	33.3	28.9	29.1	28.0	34.4	37.7	29.9	36.0	35.4							
115	36.6	32.9	29.0	30.9	27.7	27.8	28.3	33.3	36.5	29.1	34.7	33.1							
120	34.1	30.9	28.3	27.9	25.6	27.3	28.8	33.5	35.8	28.7	34.1	30.6							
125	31.2	28.5	26.3	24.7	22.8	27.6	28.5	32.7	33.8	28.8	34.0	27.6							
130	27.7	25.5	23.6	21.3	19.9	27.5	27.3	30.9	30.7	28.0	33.2	23.4							
135	23.7	22.0	20.5	17.8	16.2	26.5	25.5	28.4	27.5	26.1	30.8	19.6							
140	19.4	17.8	16.9	14.1	12.5	24.7	22.7	25.3	24.0	23.2	28.1	15.5							
145	14.8	13.2	12.8	9.99	8.58	22.1	19.9	21.9	20.1	20.9	24.8	11.3							
150	10.3	9.04	8.98	6.29	5.77	18.7	16.3	17.6	15.7	17.6	21.3	7.83							
155	6.75	5.83	5.72	3.84	3.79	14.7	12.5	12.6	10.9	13.6	16.5	4.99							
160	4.49	3.30	3.63	2.20	2.65	9.66	8.25	7.92	6.83	9.81	13.0	3.29							
165	2.32	1.97	2.19	1.35	1.85	5.77	4.65	4.80	4.45	6.62	9.17	2.43							
170	1.50	1.54	1.56	1.05	1.12	3.55	2.80	2.99	3.05	4.79	6.02	0.79							
175	1.07	1.26	0.93	0.88	1.63	2.04	1.55	1.91	2.30	3.06	3.24	0.81							
180	1.15	1.57	1.57	1.83	1.99	1.42	1.19	1.47	1.62	1.98	2.08	1.40							

C Range: 0 - 360DEG
C Interval: 30.0DEG
Test Speed: HIGH
Temperature: 25.3DEG
Operators: 曾本
Test Date: 2023-6-12

γ Range: 0 - 180DEG
γ Interval: 1.0DEG
Test System: EVERFINE GO-2000B_V1 SYSTEM V2.0.269
Humidity: 65.0%
Test Distance: 7.350m [K=1.0000]
Remarks: LM79